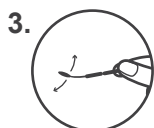


## DermaSwab DNA Collection Kit

REF 1035241100



## ENGLISH

### DermaSwab DNA Collection Kit Instructions

**RUO** For Research Use only

#### INTENDED USE:

The **DermaSwab DNA Collection Kit** is a sampling device designed for the collection of microbial DNA from skin samples and stabilisation of the recovered DNA.

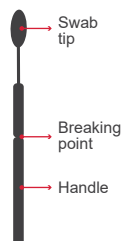
DNA from swab samples collected using the DermaSwab DNA Collection Kit remains stable for at least **6 months** at room temperature when stored in the stabilisation buffer. For long-term storage (> 6 months), samples should be stored at -20°C. For subsequent DNA extraction, the use of the **PSP® Spin Skin DNA Kit** is recommended.

#### CONTENTS:

Swab, Skin DNA Stabilizer tube, Saline Solution. The Skin DNA Stabilizer tube contains 650 µl of liquid DNA Stabilizer reagent. The Saline Solution contains 500 µl of saline solution.

#### WARNINGS AND PRECAUTIONS:

For best results, do not wash the area to be swabbed or apply cosmetic products for at least 5 hours prior to sample collection. Please follow the recommendations below for handling the swab.



Do NOT touch the swab tip. The swab tip must NOT come into contact with any surface before collection.

Do NOT hold the swab above the breaking point. Only hold the swab by the handle.

#### PROCEDURE:

Place the Saline Solution tube and the Skin DNA Stabilizer tube upright on a clean surface for later use.

1. Unscrew the lid of the **Saline Solution** tube and carefully place it on a clean surface for use in step 2. Open the swab packaging from the handle end and remove the swab.

**Note:** Do NOT touch the swab tip and do NOT hold the swab above the breaking point. Only hold the swab by the handle.

2. Carefully insert the swab tip into the Saline Solution tube and fully moisten the swab tip. Discard any remaining Saline Solution and the tube, then proceed immediately with the next step.

3. Using a back-and-forth motion, rub the entire skin area to be sampled (at least 5 x 5 cm) for a total of **30-60 seconds**. Rotate the swab at least once during sampling.

4. While holding the swab by the handle, carefully unscrew the red cap from the **Skin DNA Stabilizer** tube. Keep the tube upright to prevent spillage. Place the red cap aside for use in step 7.

**Note:** The inner surface of the cap must NOT come into contact with any surface.

5. Insert the swab into the Skin DNA Stabilizer tube.

6. Break the swab at the breaking point and discard the handle.

7. While applying downward pressure, screw the red cap tightly onto the Skin DNA Stabilizer tube.

8. Gently shake the tube for 15 sec to mix the collected skin material with the DNA Stabilizer reagent.

9. Label the Skin DNA Stabilizer tube with donor name and the collection date. The specific body site sampled (e.g. cheek, forearm) may be recorded under "Skin Site"

#### SHIPMENT:

Ship according to locally applicable guidelines and regulations such as UN 3373 (Biological Substance, Category B).

#### SAFETY PRECAUTIONS:

Keep out of the reach of children. Small cap: choking hazard. Do not use the DermaSwab DNA Collection Kit if content of the Skin DNA Stabilizer is spilled.

Do not drink the DNA Stabilizer reagent. Wash with water if DNA Stabilizer reagent comes in contact with skin or eyes.



#### WARNING:

##### Hazard statements

**H319:** Causes serious eye irritation.

**H412:** Harmful to aquatic life with long lasting effects.

##### Precautionary statements

**P264:** Wash hands, forearms and face thoroughly after handling.

**P273:** Avoid release to the environment.

**P280:** Wear protective gloves/protective clothing/eye protection/face protection/hearing protection.

**P305+P351+P338:** IF IN EYES: Rinse cautiously with water for several minutes. Remove contact lenses, if present and easy to do. Continue rinsing.

**P337+P313:** If eye irritation persists: Get medical advice/attention.

**P501:** Dispose of contents/container to hazardous or special waste collection point, in accordance with local, regional, national and/or international regulation.

#### LABEL LEGEND:

**LOT** Lot number

**RUO** Research Use Only

**REF** Catalogue number

Expiry date

Consult operating instructions

Store at room temperature 15 – 30°C

Do not reuse

Amount of sample collectors